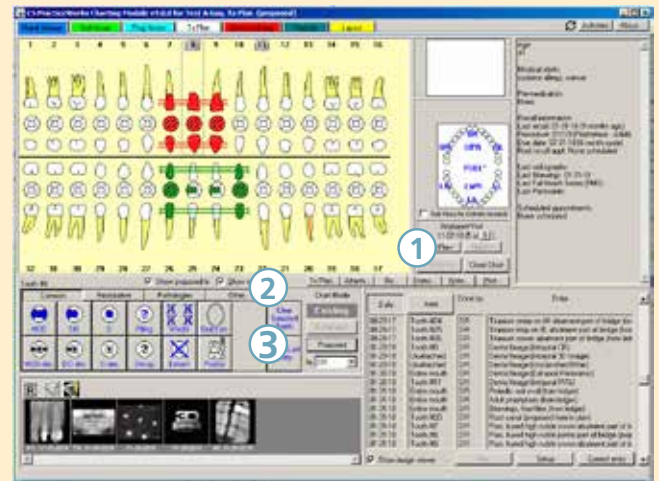
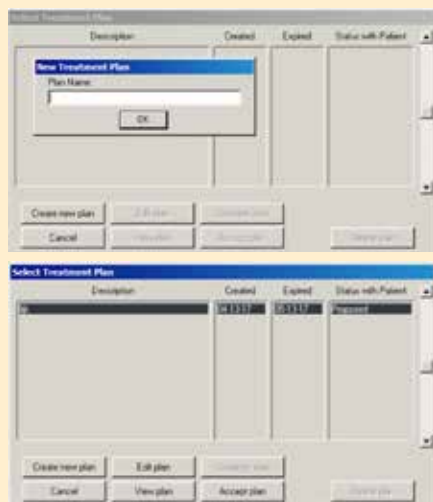


CLINICAL CHART BUTTON UPDATES

1 “Suspend” button now labeled “Post Work”
 The “Suspend” button is now labeled “Post Work” to better describe what happens when users select it. When they are finished working in the chart, users can select “Post Work” to remain in the chart and allow others to complete additional workflows, e.g., checking out the patient while the doctor is adding notes.

2 New! – Tx Plan Button
 Users now have more options with the “Tx Plan” button. They no longer have to toggle back and forth to do basic Tx Plan functions.

- When users select “Create New Plan,” they can create and name a new plan from here
- When users select “View Plan,” the plan loads into the chart
- If the plan is not already in use, users can select “Edit plan” to edit it in Proposed mode



3 Update! Chart Mode Selector
 The Chart Mode Selector now has buttons instead of radio buttons, which makes the mode display clearer.

- “Existing” – where you chart work that has already taken place
- “Completed” – where you chart work completed today
- “Proposed” – where you chart the treatment plan

PARALLEL WORKFLOWS ENABLED

Multiple Users in a Patient Chart or Tx Plan

- A hygienist can chart while another staff member is working on the patient’s demographics/insurance—and vice versa
- The front desk staff can view the patient record while the clinical staff is working in the patient’s chart—and vice versa
- Any user can view images while others are in the patient chart

Multiple Users in a Patient Clipboard or Patient Records

Patient is seated in the chair and hygienist launches the patient chart. The doctor wants to review the chart—but not in front of the patient. Parallel workflows enable the doctor to review notes and hard and soft tissue charts while the chart is open elsewhere in the practice.

OTHER ENHANCEMENTS

- When rescheduling for a provider, the appointment book changes the color of the provider being moved
- Microsoft Server 2016 Certification
- Microsoft Outlook 2016 Certification
- CS PracticeWorks Cloud users can run Pervasive v12